

SOVEREIGN HILLS, TOWNHOUSES

Landscape Development Application Package

13th October 2023



Australia
China
South East Asia

Follow us on



placedesigngroup.com

Report title	Sovereign Hills Townhouse DA
Document number	2522067
Prepared for	Lewis Land Group
Authors	ZW, RH
Revision number	04
Revision issue date	13.10.2023
Approved	TF
Reason for revision	Development Application

Document History & Status			
Rev.	Date	Description	Approved by
01	15.12.2022	Development Application	TF
02	22.12.2022	Development Application	TF
03	15.03.2023	Development Application	TF
04	13.10.2023	Development Application	TF

Disclaimer: This report has been prepared in accordance with the scope of services described in the contract or agreement between Place Design Group Pty Ltd ACN 082 370063 and the Client. The report relies upon data, surveys, measurements and results taken at or under the particular times and conditions specified herein. Any findings, conclusions or recommendations only apply to the aforementioned circumstances and no greater reliance should be assumed or drawn by the Client. Furthermore, the report has been prepared solely for use by the Client and Place Design Group accepts no responsibility for its use by other parties.

DRAWING SCHEDULE

DESIGN VISION + PRINCIPLES	3
STREETSCAPE URBAN FABRIC	4
LANDSCAPE MASTERPLAN	5
ARRIVAL EXPERIENCE DETAIL PLAN	6
COMMUNITY HUB DETAIL PLAN	7
LANDSCAPE PLAN/ CIRCULATION	8
LANDSCAPE SECTION / GATEWAY FORECOURT	9
RESIDENTIAL DESIGN / TYPE 1	10
RESIDENTIAL DESIGN / TYPE 2	11
RESIDENTIAL DESIGN / TYPE 3	12
FENCING STRATEGY	13
PLANTING SCHEDULE	14
TREE STRATEGY	15
PLANTING PALETTE	16
PRECEDENT IMAGES / PLANTING	17
PRECEDENT IMAGES / MATERIALS	19
TYPICAL DETAILS	20



Place Design Group Pty Ltd
3B/830-832 Elizabeth Street
Waterloo, NSW
2017, Australia
T + 61 2 9290 3300

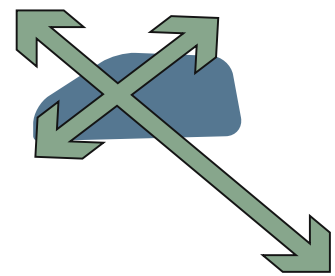
SOVEREIGN HILLS TOWNHOUSES
LANDSCAPE DEVELOPMENT APPLICATION

DATE	PROJECT NO.	REVISION	PAGE NO.
13/10/2023	2522067	04	2

Landscape Vision - Design Principles

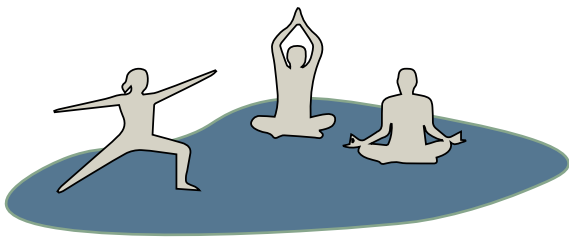
“A JOURNEY THROUGH THE LANDSCAPE SHAPED BY MOMENTS”

CONNECTING TO THE EXISTING LANDSCAPE CHARACTER



Allow for placemaking opportunities and create a strong connection to the existing landscape setting

PROVIDE COMMUNITY FOCUSED SPACES



Design for better living and to promote areas which enrich our sense of community

ENHANCING THE URBAN FABRIC



Provide a positive microclimate environment and a strong connection to the existing riparian corridor

Streetscape Urban Fabric / Look and Feel



“A JOURNEY TOUCHED BY NATURE”



Landscape Masterplan



LEGEND

- 1 Gateway vehicle entrance with avenue of trees
- 2 Landscape journey with points of activation
- 3 Main Loop Road
- 4 Tertiary Streets
- 5 Allocated on street parking
- 6 Local/Native species with a layered approach to planting
- 7 Community Hub with outdoor pool/ lounge area/ dining table
- 8 Perimeter Access Road for Fire Brigade Vehicles
- 9 Buffer planting to fencing

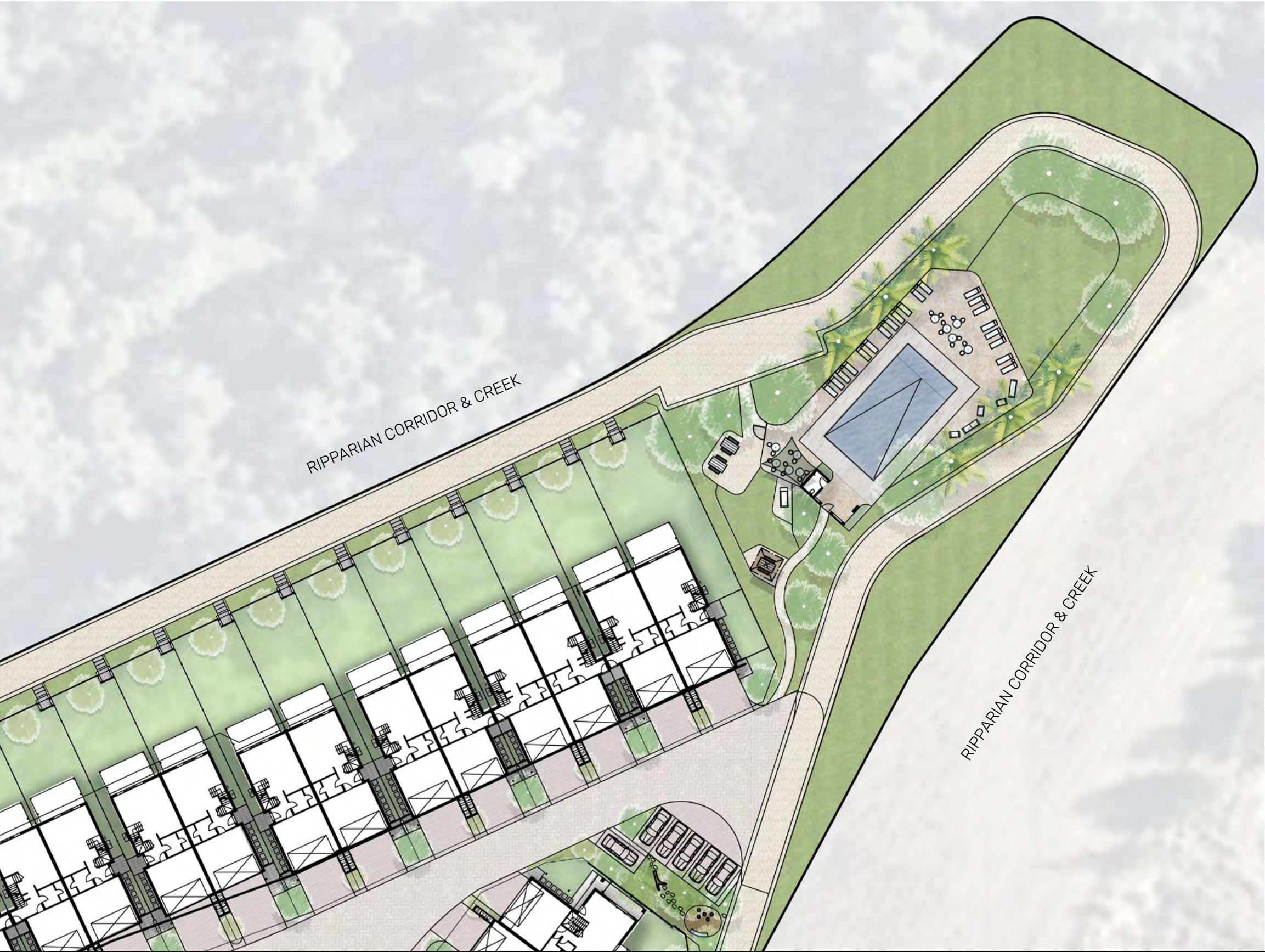


Masterplan Detail Plan / Arrival Experience



- LEGEND**
- Gateway entry with avenue of feature deciduous trees
 - Service vehicle access. Proposed crushed gravel surface material
 - Pedestrian access path
 - Moments in the landscape with integrated play and resting points
 - Stepping stones amongst planting as an integrated approach to nature
 - Pedestrian crossing with surface markings
 - Buffer planting - local/native
 - Tertiary Streets - Shared surface treatment
 - Main loop road
 - Residential driveways
 - Residential gardens
 - Proposed Trees
 - Retaining wall to edge of proposed path. Refer Civil engineer's drawings

Detail Plan - Community Hub



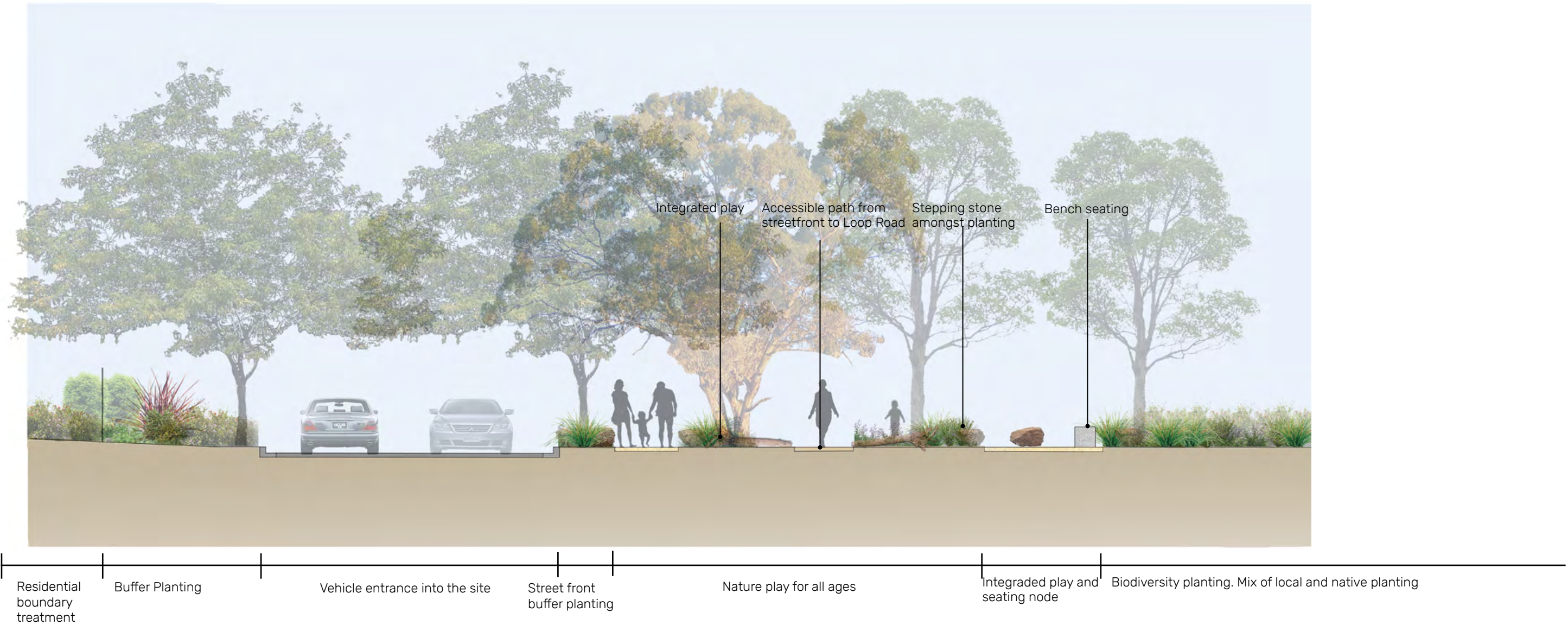
- LEGEND**
- Tertiary Street. Shared surface treatment
 - Integrated play for all ages/ resting point
 - Emergency vehicle access/ Informal path
 - Access path to community hub
 - Local/ native/ exotic plant species
 - Pool spill out zone with chairs/tables
 - Pool house. Refer Architect's Drawings
 - On-street parking
 - Residential driveways
 - Buffer planting along residential boundary
 - Residential gardens
 - Outdoor Lounge
 - Turf
 - Buffer planting - local/native
 - Picnic Tables
 - BBQ
 - Picnic Shelter
 - Shade Structure

Landscape Plan / Circulation

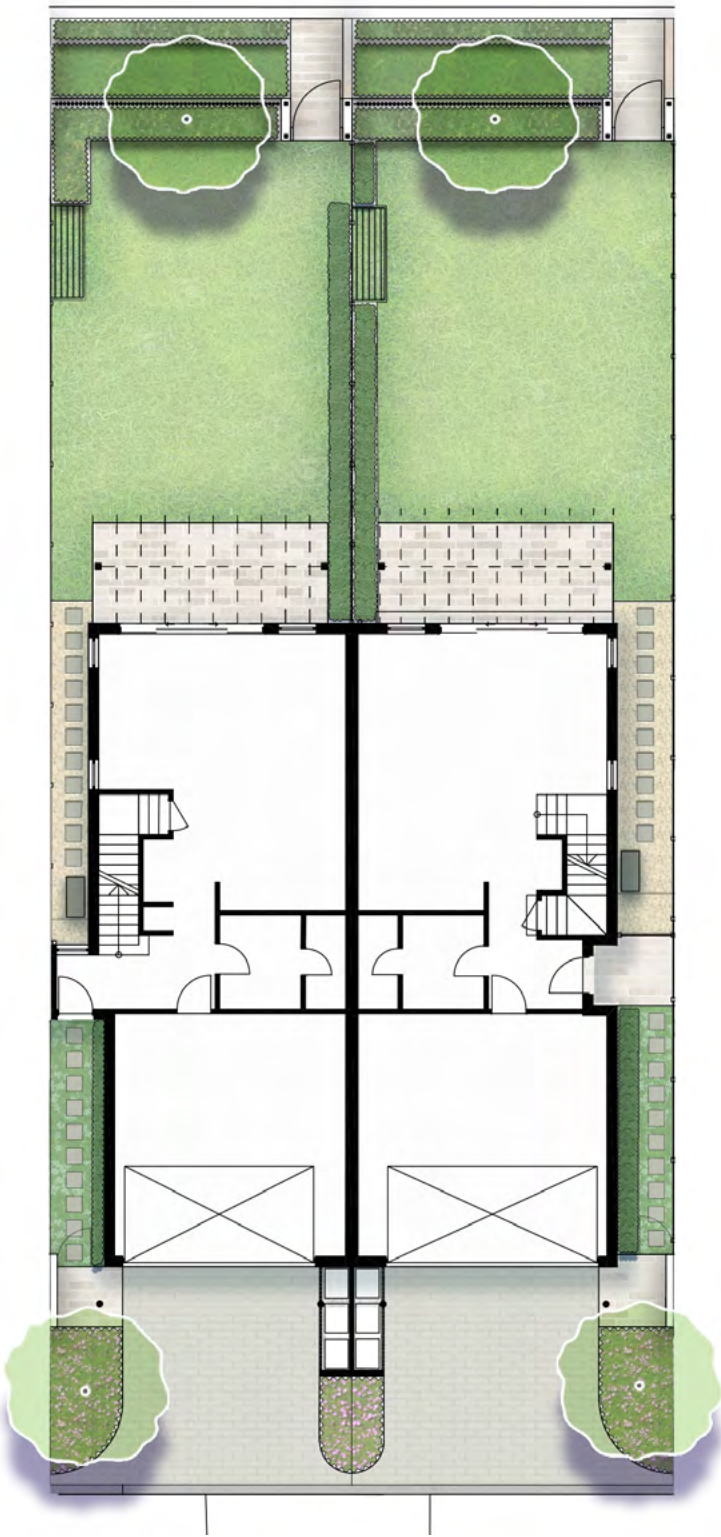


- LEGEND
- Site boundary
 - Main entry
 - Loop road
 - Tertiary streets
 - Pedestrian priority access path
 - Secondary access points
 - Services lane

Landscape Section AA - Gateway Forecourt



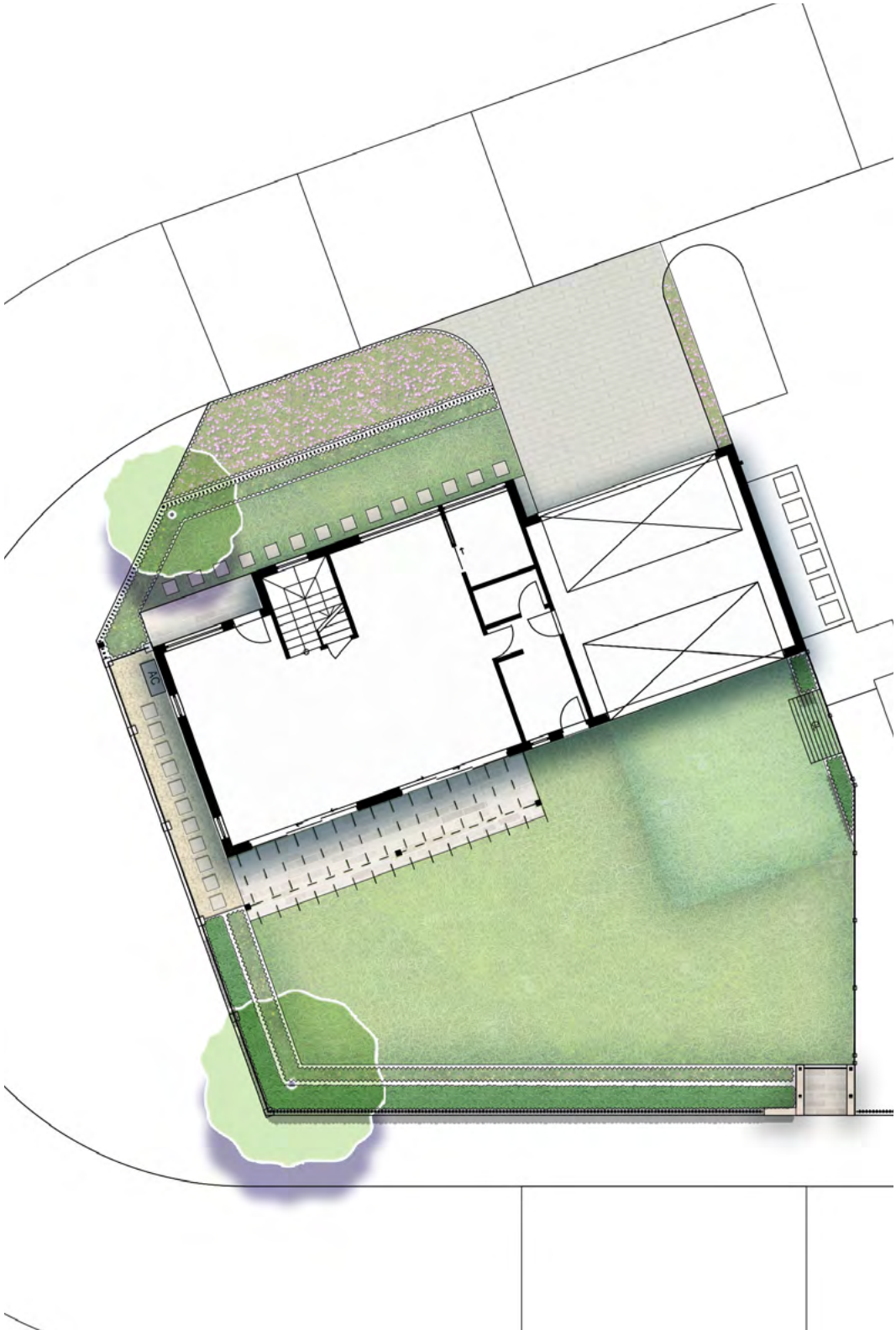
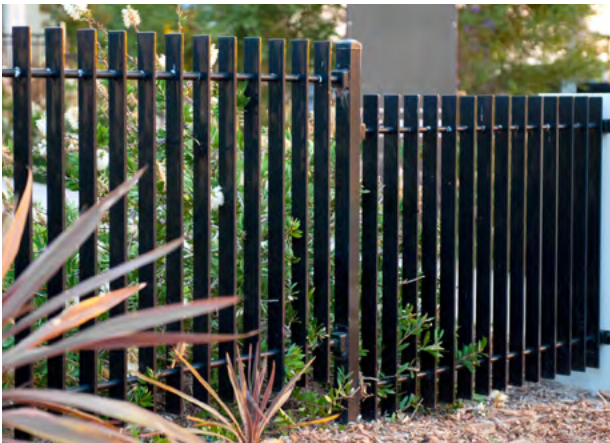
Residential Design / Type 1 Detail Plan



LEGEND

- Residential building
- Perimeter layered planting with shrubs, grasses and groundcovers
- Screen/ hedge planting
- Feature planting with colour and foliage contrast
- Paved driveway area
- Feature trees
- Stepping stones amongst groundcover
- Stepping stones in gravel
- Paving with pergola structure
- Air-conditioning unit
- Clothes Line
- Open turf area
- Rear boundary 1.5m Aluminium slat fence
- 1.8m boundary fence
- Bin storage
- Access gate

Residential Design - Type 2 Detail Plan



LEGEND

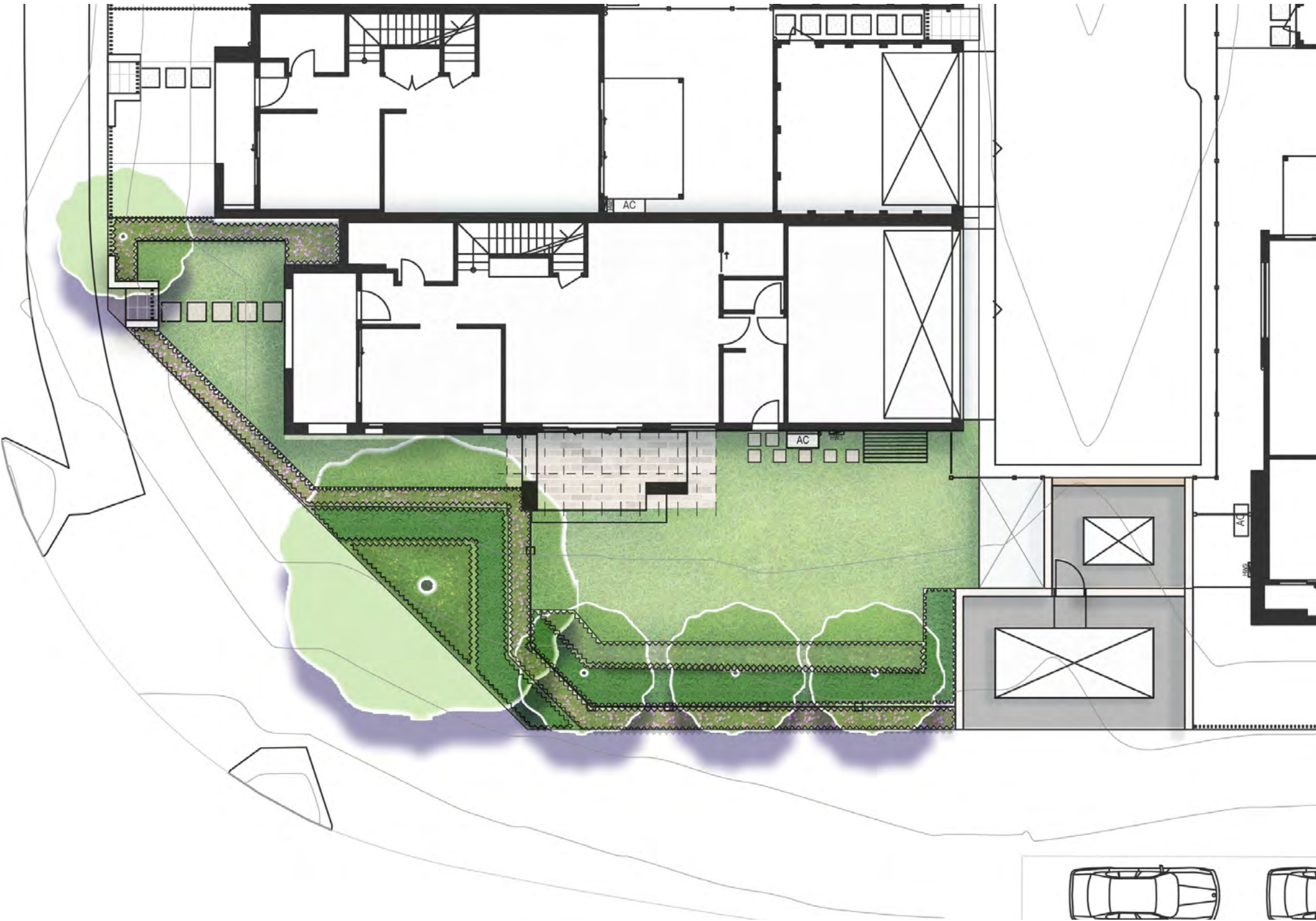
- Residential building
- Perimeter layered planting with shrubs, grasses and groundcovers
- Screen/ hedge planting
- Streetfront planting with foliage and colour contrast
- Stepping stones in grass
- Feature trees
- Paving and pergola area
- Stepping stones in gravel
- Air-conditioning unit
- Clothes line
- Driveway access
- Open turf area
- Streetfront boundary 1.2m aluminium slat fence
- Rear boundary 1.5m aluminium slat fence
- 1.8m colourbond steel fence
- Reinforced turf area with potential vehicular access

Residential Design / Type 3 Detail Plan



LEGEND

- Residential building
- Perimeter layered planting with shrubs, grasses and groundcovers
- Feature tree - refer to tree planting plan
- Hedge planting
- Boundary planting
- Stepping stones in grass
- Access gate
- Air conditioning unit
- Clothes line
- Outdoor paved area
- Open turf area
- 1.2m aluminium blade fence



Landscape Plan / Fencing Strategy



- LEGEND
- Site Boundary
 - Fence Type 1
Height: 1.8m high
Colourbond fence
 - Fence Type 2
Height: 1.2m- 1.5m
Aluminium slat fence
 - Fence Type 3
Brick retaining wall
 - Fence Type 4
Height:1.8m high
Permeable fence

Planting Schedule

Sovereign Hills Townhouses Planting Schedule					
Botanical Name	Common name	Mature Height (m)	Pot size	Spacing (m²)	L= Local planting N= Native planting E= Exotic planting
TREES					
Backhousia myrtifolia	Grey myrtle	7m	100L	As Shown	L
Cupaniopsis anarcardiodes	Tuckaroo	15m	100L	As Shown	L
Eucalyptus saligna	Sydney Blue Gum	40m	100L	As Shown	L
Fraxinus pennsylvanica 'Cimmaron'	Cimmaron Ash	13m	100L	As Shown	E
Glochidion ferdinandii	Cheese Tree	6m	100L	As Shown	L
Elaeocarpus reticulatus	Blueberry Ash	10m	100L	As Shown	L
Lophostemon confertus	Brush Box	15m	100L	As Shown	L
Liquidambar styraciflua	Sweet Gum	30m	100L	As Shown	E
Archontopheonix cunninghamiana	Bangalow Palm	20m	100L	As Shown	L
Melaleuca viminalis	Weeping Bottlebrush	10m	100L	As Shown	L
Tristaniopsis laurina 'Luscious'	Water Gum	12m	100L	As Shown	L
Waterhousea floribunda 'Green Avenue'	Weeping Lilly Pilly	15m	100L	As Shown	N
Toona ciliata	Red Cedar	25m	100L	As Shown	L
SHRUBS					
Azalea indica 'Alba Magnifica'	Azalea	2 x 2	300mm	4/m2	E
Callistemon citrinus 'Better John'	Bottlebrush	1.2 x 0.9	300mm	3/m2	N
Lavandula angustifolia 'Munstead'	Munstead Lavender	0.6 x 0.7	300mm	3/m2	E
Melaleuca linariifolia 'Carpet Top'	Honey Myrtle	1.5 x 2	300mm	4/m2	L
Phormium 'Maori Maiden'	New Zealand Flax	1 x 1	300mm	3/m2	E
Phormium tenax 'Purpureum'	New Zealand Flax	2 x 2	300mm	4/m2	E
Banksia spinulosa	Hairpin Banksia	2 x 2	300mm	3/m2	L
alpinia caerulea	Native Ginger	2 x 1	300mm	4/m2	L
Syzygium australe 'Tiny Trev'	Lilly Pilly	1.2 x 0.7	300mm	3/m2	L
Ceratopetalum gummiferum	Christmus Bush	5 x 3	300mm	3/m2	L
Westringia fruticosa 'Grey Box'	Compact Coastal Rosemary	0.5 x 0.5	300mm	3/m2	N
Westringia fruticosa 'Blue Gem'	Coastal Rosemary	1.5 x 1.3	300mm	4/m2	N
Ilex aquifolium	Common Holly	3 x 1	300mm	4/m2	E
Cordyline stricta	Narrow-leaved Palm Lily	3 x 1	300mm	4/m2	L
Kunzea capitata	Purple Kunzea	1.5 x 2	300mm	4/m2	L
GROUNDCOVERS					
Crinum pedunculatum	Swamp Lily	2 x 2	150mm	6/m2	L
Carpobrotus glaucescens	Pigface	0.3 x 2	150mm	6/m2	N
Actinotus helianthii (headlands)	Clumped Flannel Flower	1 x 3	150mm	6/m2	L
Helichrysum bracteatum 'Scarlet'	Paper Daisy	1 x 0.5	150mm	6/m2	N
Hardenbergia violacea	Purple Coral Pea	0.5 x 2	150mm	6/m2	L
Pandorea pandorana 'Snowbells'	Wonga Wonga Vine	0.1 x 2	150mm	6/m2	L
Scaevola aemula 'Aussie Crawl'	Fan Flower	0.5 x 1	150mm	6/m2	N
Xerochrysum bracteatum (headlands)	Prostrate Straw Flower	0.5 x 1	150mm	6/m2	L
GRASSES					
Carex appressa	Tall Sedge	1 x 1	150mm	4/m2	L
Lomandra Longifolia	Spiny-headed Mat Rush	0.5 x 0.5	150mm	4/m2	L
Ficinia nodosa	The Knotted club-rush	1.5 x 2	150mm	4/m2	L
Juncus usitatus	Common Rush	1.2 x 1.5	150mm	4/m2	N
Lomandra filiformis	Wattle Mat Rush	0.2 x 0.5	150mm	6/m2	N
Lomandra fluviatilis 'Shara'	Mat Rush	0.5 x 0.5	150mm	6/m2	N
Libertia grandiflora	New Zealand Iris	1 x 0.6	150mm	4/m2	E
Lomandra 'Tropic Belle'	Mat Rush	1.2 x 1.2	150mm	4/m2	N
Pennisetum alopecuroides	Chinese Fountain Grass	1 x 0.6	150mm	4/m2	N
Pennisetum alopecuroides 'Nafray'	Swamp Foxtail Grass	0.7 x 0.8	150mm	6/m2	N
Poa labillardieri 'Eskdale'	Blue Tussock Grass	0.6 x 0.5	150mm	6/m2	N
Pennisetum setaceum 'Rubrum'	Purple Fountain Grass	1.5 x 1	150mm	4/m2	E
Dianella congesta	Paroo Lily	1 x 0.5	150mm	4/m2	L
Lomandra multiflora	Many-flowered Mat Rush	0.2 x 0.5	150mm	4/m2	L
Imperata cylindrica	Blady Grass	0.5 x 0.5	150mm	6/m2	L
Themeda triandra	Kangaroo Grass	1 x 1	150mm	4/m2	N

*Local species refer to species found in the PORT MACQUARIE-HASTINGS INDIGENOUS SPECIES LANDSCAPING SPECIES LIST

Landscape Plan / Tree Strategy



- LEGEND
- Cupaniopsis anacardioides
 - Glochidion ferdinandii
 - Eucalyptus saligna
 - Liquidamber styraciflua
 - Archontopheonix cunninghamiana
 - Toona ciliata
 - Fraxinus pennsylvanica 'Cimmaron'
 - Residential Trees
 - Backhousia myrtifolia
 - Glochidion ferdinandii
 - Lophostemon confertus
 - Tristaniopsis laurina
 - Melaleuca viminalis
 - Waterhousea floribunda
 - Elaeocarpus reticulatus

Planting Palette

Trees



Backhousia myrtifolia



Eucalyptus saligna



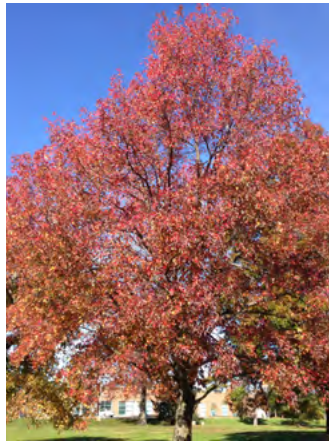
Glochidion ferdinandii



Cupaniopsis anacardioides



Lophostemon confertus



Liquidambar styraciflua



Melaleuca viminalis



Tristaniopsis laurina 'Luscious'



Waterhousea floribunda
'Green Avenue'



Fraxinus pennsylvanica
'Cimmaron'



Toona ciliata



Archyontophoenix cunninghamiana

Shrubs



Azalea indica 'Alba Magnifica'



Callistemon citrinus 'Better John'



Lavandula angustifolia



Melaleuca linariifolia 'Carpet Top'



Phormium 'Maori Maiden'



Phormium tenax 'Purpureum'



Banksia spinulosa



Alpinia caerulea



Syzygium australe 'Tiny Trev'



Ceratopetalum gummiiferum



Westringia fruticosa 'Grey Box'



Westringia fruticosa 'Blue Gem'



Ilex aquifolium



Kunzea capitata

Planting Palette

Groundcovers



Crinum pedunculatum



Carpobrotus glaucescens



Actinotus helianthii



Helichrysum bracteatum 'Scarlet'



Scaevola aemula



Xerochrysum bracteatum



Hardenbergia violacea



Pandorea pandorana 'Snow bells'

Grasses



Carex appressa



Lomandra Longifolia



Ficinia nodosa



Juncus usitatus



Lomandra filiformis



Lomandra fluviatilis 'Shara'



Libertia grandiflora



Imperata cylindrica



Lomandra 'Tropic Belle'



Pennisetum alopecuroides



Pennisetum alopecuroides 'Nafray'



Poa labillardieri 'Eskdale'



Pennisetum setaceum 'Rubrum'



Dianella congesta



Themeda triandra



Lomandra multiflora



Imperata cylindrica

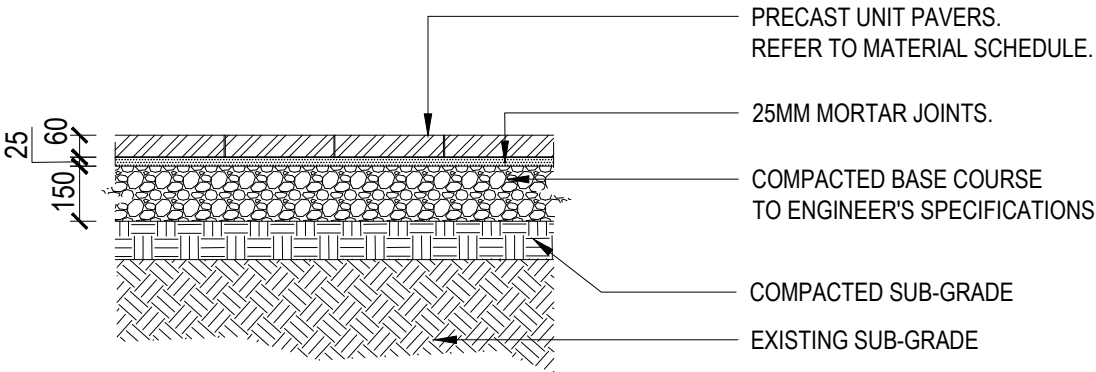
Precedent Images / Planting



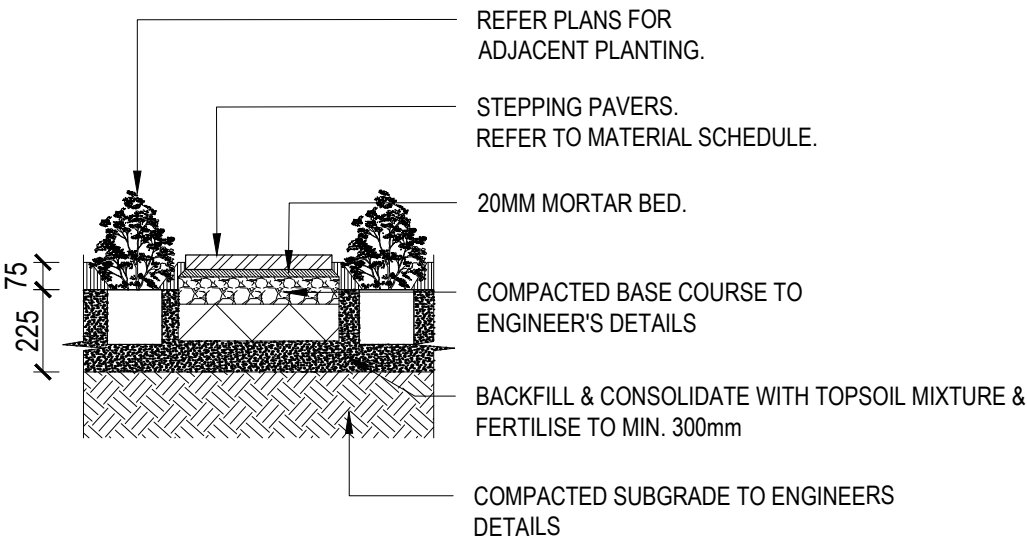
Precedent Images / Materiality



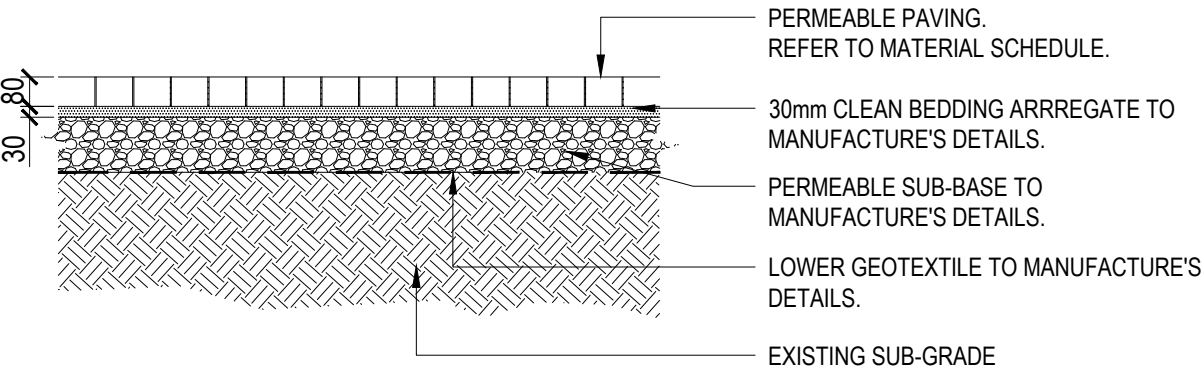
Typical Details



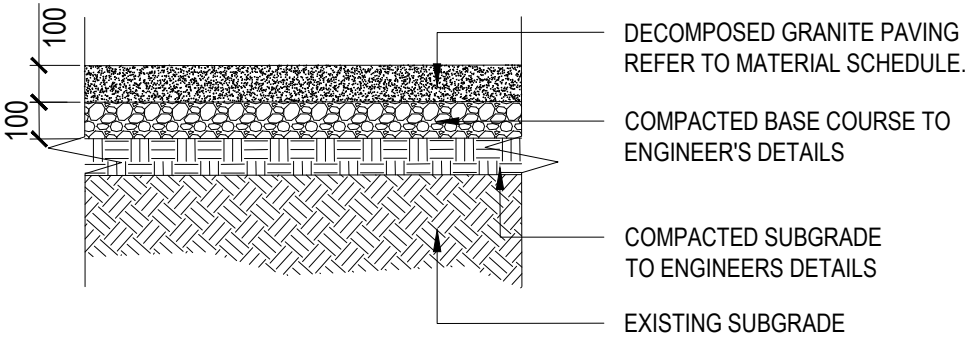
01 CONCRETE PAVERS ON GRADE
SCALE 1:20



03 STEPPING PAVER IN GARDEN BED ON GRADE
SCALE 1:20

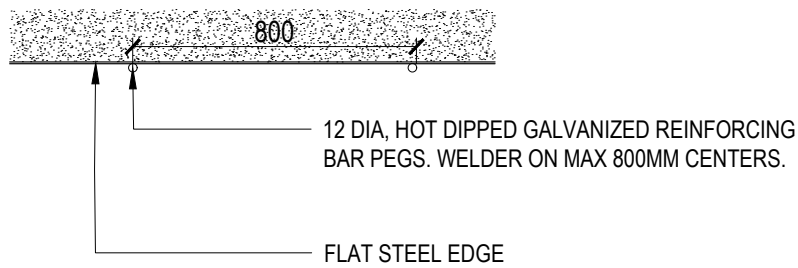


02 PERMEABLE PAVERS ON GRADE
SCALE 1:20

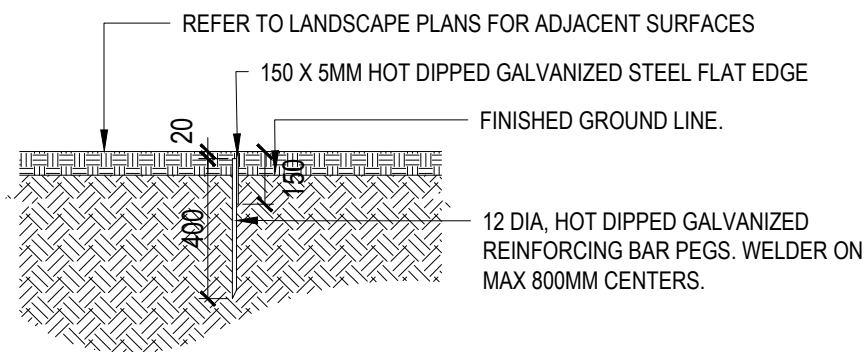


04 DECOMPOSED GRANITE PAVING ON GRADE
SCALE 1:20

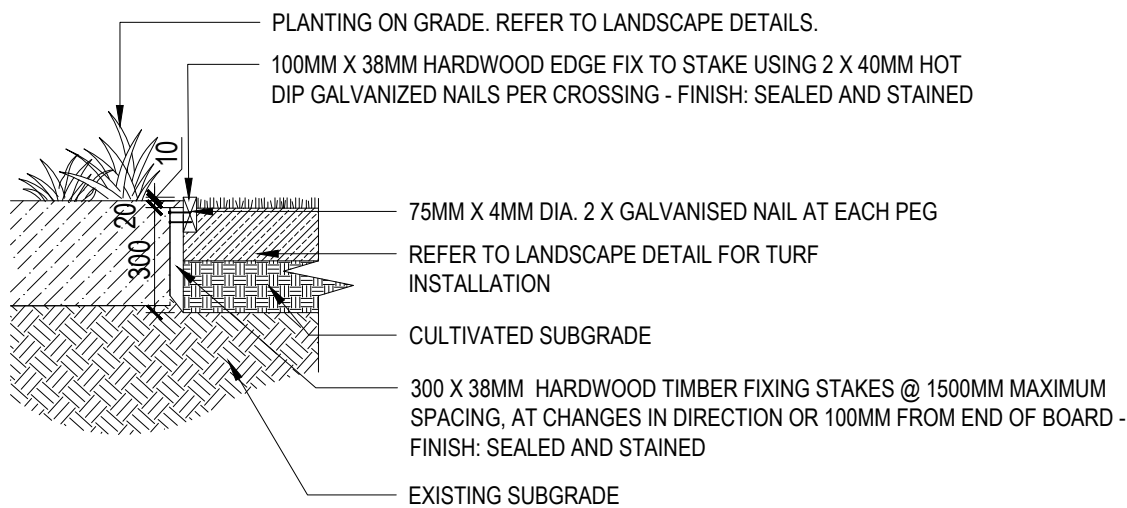
Typical Details



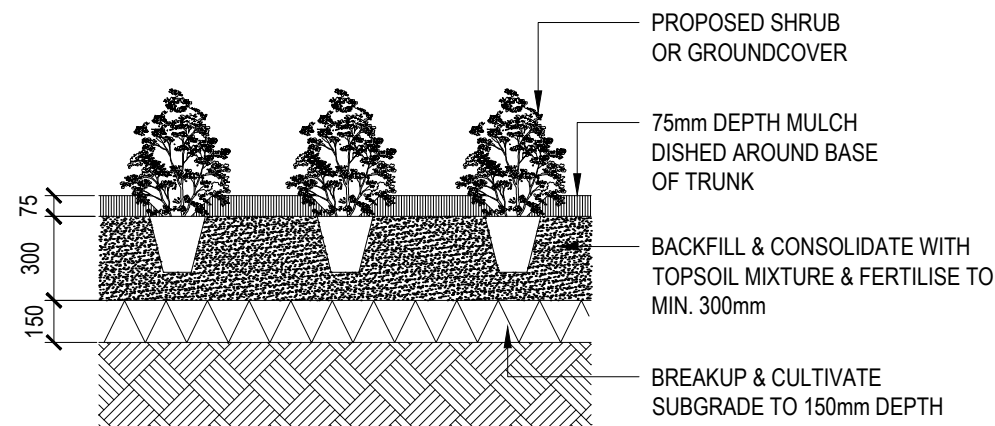
05 STEEL EDGE PLAN VIEW
SCALE 1:20



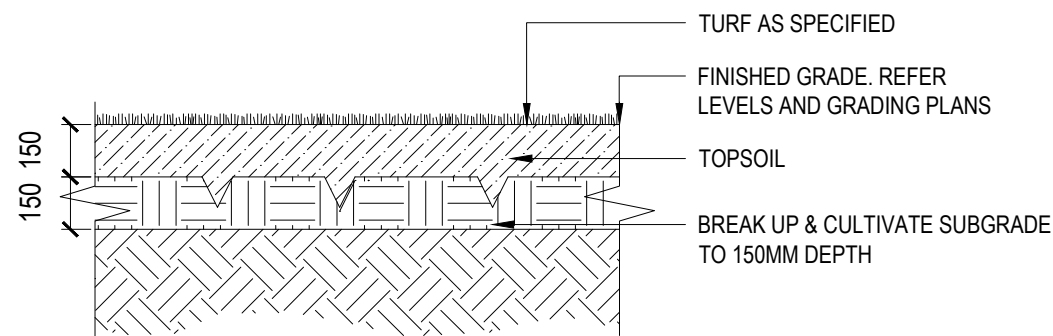
06 STEEL EDGE SECTION
SCALE 1:20



07 TIMBER EDGE
SCALE 1:20

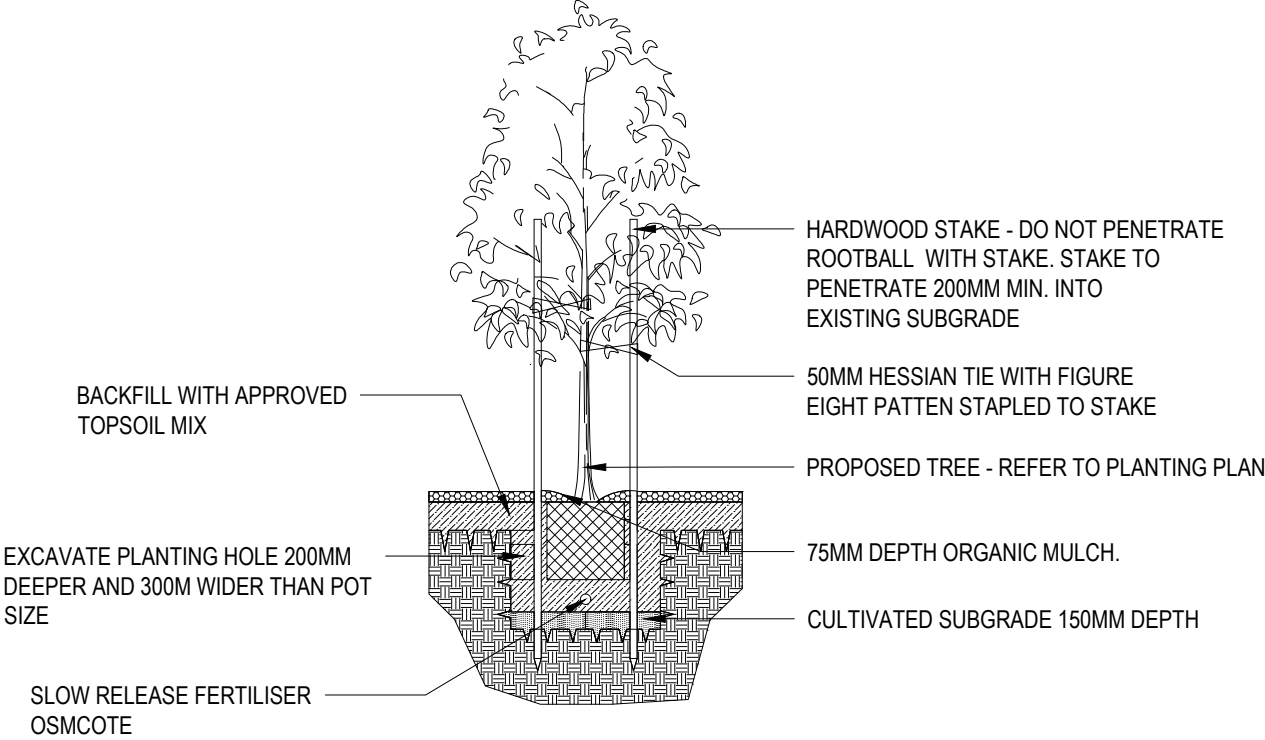


08 SHRUBS AND GROUNDCOVER PLANTING ON GRADE
SCALE 1:25



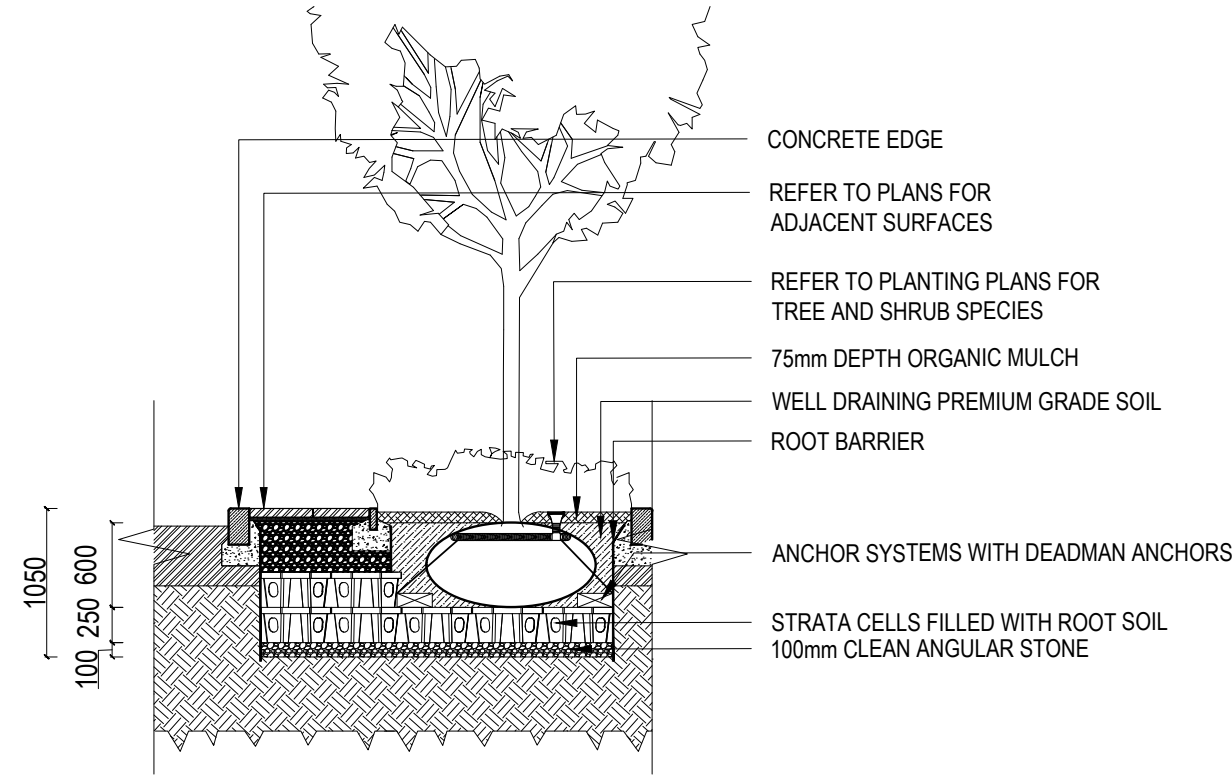
09 TURF ON GRADE
SCALE 1:20

Typical Details



NOTE: TREE PLANTING HOLE DIMENSIONS ACCORDING TO CONTAINER SIZE: WIDTH MIN. 2X ROOT BALL DIAMETER (MIN. 820 / 1100 / 1400MM FOR 45/75/100L CONTAINERS) AND DEPTH MIN. 1.5X ROOT BALL HEIGHT (MIN. 615/825/1050MM FOR 45/75/100L CONTAINERS)

10 TREE PLANTING ON GRADE - TYPICAL DETAIL
SCALE 1:50



11 TREE PLANTING IN STRATA CELLS - TYPICAL DETAIL
SCALE 1:50

